



## DID YOU KNOW YOU HAVE

**SOLIDWORKS | CAM**  
Powered by CAMWorks

SOLIDWORKS CAM Standard is a 2.5 & 3 axis milling solution included in every seat of SOLIDWORKS\*

\*Versions 2018, 2019 and 2020, currently on subscription

## THE SMART MANUFACTURING ECOSYSTEM

### AUTOMATING CNC PROGRAMMING WITH SOLIDWORKS CAM

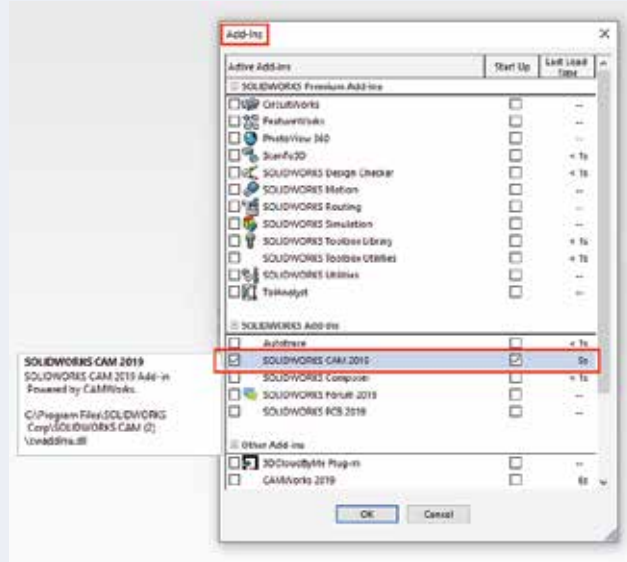
SOLIDWORKS CAM is an integrated 2.5 & 3 axis CNC milling and 2 axis CNC lathe programming solution powered by CAMWorks. By utilizing the emerging technologies of Model Based Definition (MBD) and Knowledge Based Machining, SOLIDWORKS CAM can rapidly transform your design-to-manufacturing process by improving communication, reducing errors, reducing cycle times, and increasing your product quality.

**CAMWorks is the only CAM system that is 100% compatible with SOLIDWORKS CAM!**

#### Where can I find SOLIDWORKS CAM in SOLIDWORKS?

\* Every seat of SOLIDWORKS 2018, SOLIDWORKS 2019 & the upcoming SOLIDWORKS 2020 currently on subscription, includes SOLIDWORKS CAM Standard

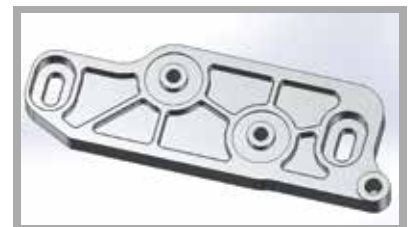
You can find SOLIDWORKS CAM under Add-ins



#### Which SOLIDWORKS CAM Package is Right for You?

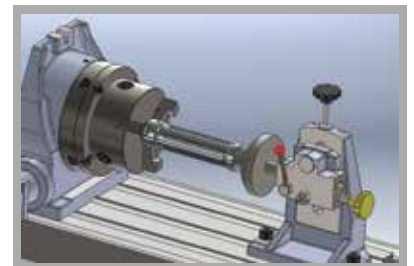
##### SOLIDWORKS CAM Standard

SOLIDWORKS CAM Standard includes programming for individual 2.5 & 3 Axis Milling parts and includes Tolerance-Based Machining (TBM)



##### SOLIDWORKS CAM Professional

SOLIDWORKS CAM Professional builds on the capabilities of SOLIDWORKS CAM Standard to increase programming capabilities. SOLIDWORKS CAM Professional adds: Assembly Machining, Turning, 3+2 Milling, High-Speed Machining, and support for multiple SOLIDWORKS CAM configurations



#### Where Can I Get Post Processors?

Post processors are a critical part of any CAM system. Their basic function is to translate the toolpath you see on screen to machine-readable code (G-code), but with the right post processor you can reduce machine cycle time, remove manual editing and provide more information to your operators for a faster setup time

Here is the link for our post processor library - <https://camworks.com/post-processor-library/>

#### Where Can I Access SOLIDWORKS CAM Trainings & Webinars?

CAMWorks team conducts SOLIDWORKS CAM trainings and webinars every quarter. You can register for webinars on below link <https://camworks.com/new-events/webinar-learn-solidworks-cam-today/>

You can also reach out to your local SOLIDWORKS reseller and <https://www.solidprofessor.com/>

# SOLIDWORKS CAM BENEFITS

## Reduce Programing Time

- Simplifies collaboration - single design and programming environment allows easier transition to CAM
- Rules-based machining allows companies to capture their best practices
- Feature-based intelligent machining

## Improve Quality

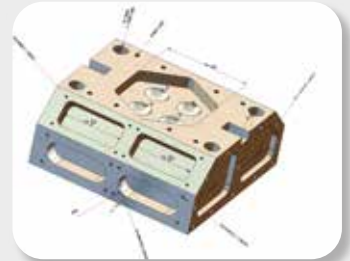
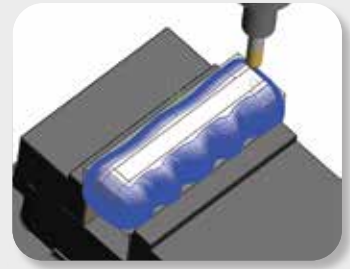
- Automatically updates toolpaths to design changes
- Utilizes concurrent development process - allowing companies to perform tasks sooner, find problems earlier, and reduce rework and scrap

## Faster Cycle Times

- Reduce cycle time up to 80%
- Increase tool life up to 500%
- Often doubles machining capacity

## Tolerance Based Machining

- Reads SOLIDWORKS MBD/DimXpert dimensions and surface finishes
- Automatically selects machining strategies to meet the specified tolerances



## SOLIDWORKS CAM UPGRADE PATH

PRODUCT	SOLIDWORKS CAM		CAMWorks			
	Standard	Professional	Standard	Milling Professional	Turning Professional	Premium
<b>CNC Programming Capability</b>						
2.5 Axis and Basic 3 Axis Milling	✓	✓	✓	✓	✓	✓
Feature-Based Machining with Feature Recognition	✓	✓	✓	✓	✓	✓
Area Clear Roughing, Flat Area, and Z Level Finishing	✓	✓	✓	✓	✓	✓
<b>Standard Features</b>	✓	✓	✓	✓	✓	✓
NC Editor with Backplotting - Powered by CIMCO	✓	✓	✓	✓	✓	✓
Integrated Tolerance Based Machining (iTBM)	✓	✓	✓	✓	✓	✓
Part Document Machining	✓	✓	✓	✓	✓	✓
Assembly Document Machining		✓	✓	✓	✓	✓
Multiple CAM Configurations		✓	✓	✓	✓	✓
<b>4 &amp; 5 Axis Positioning</b>		✓	✓	✓	✓	✓
VoluMill 2.5 Axis Roughing		✓	✓	✓	✓	✓
<b>Turning for CNC Lathes</b>		✓	✓	✓	✓	✓
Sub-Spindle Programming			✓	✓	✓	✓
Two Trurret Support			✓	✓	✓	✓
<b>Rotary Milling</b>			✓	✓	✓	✓
<b>3 Axis Milling – Advanced</b>				✓		✓
Advanced 3 Axis Roughing and Finishing Capabilities				✓		✓
3 Axis Undercutting with Standard and Custom Tools				✓		✓
<b>Mill-Turn</b>				✓	✓	✓
<b>Sync Manager for Synchronized Machining</b>					✓	✓
<b>CAMWorks Virtual Machine Standard</b>					✓	✓
<b>4 &amp; 5 Axis Simultaneous Milling</b>						✓